

PROSPECTUS

# KINGSTON MODEL SCHOOL

A unit of Kingston Educational Institute

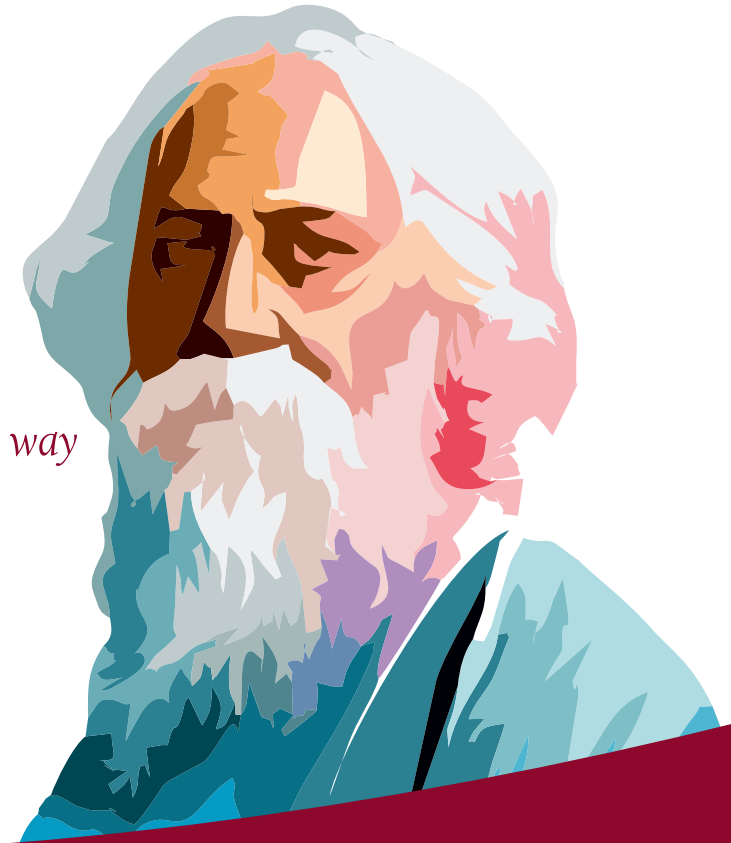


**I AM  
KINGSTONIA**

**I AM THE BEST I CAN BE**

**ASPIRE    ACHIEVE    ADVANCE**

“ Where the mind is without fear  
 and the head is held high,  
 where knowledge is free.  
 Where the world has not been broken up into  
 fragments by narrow domestic walls.  
 Where words come out from the depth of truth,  
 where tireless striving stream of reason has not lost it's way  
 into the dreary desert sand of dead habit.  
 Where the mind is led forward by three  
 into ever widening thought and action.  
 In to that heaven of freedom, my father,  
 Let my country awake! ”



## THE FOUR PILLARS OF EDUCATION

- Independent judgement
- Sense of personal responsibility
- Tapping the burried treasure of hidden talents

LEARNING  
TO BE

LEARNING  
TO KNOW

- Instrumental basic learning skills
- Foundational skills
- Presupposes 'learning to learn'
- Foundation for lifelong learning
- Preparation for the learning society

- Learning for work and life
- Competencies to deal with unforeseeable situations
- Alternating study and work

LEARNING  
TO DO

LEARNING  
TO LIVE  
TOGETHER

- Understanding others
- Respect for human dignity and diversity
- Learning for responsible and active citizenship

# I AM WHAT I CHOOSE TO BE

- DREAMER
- DOER
- ACHIEVER
- EXPLORER
- CREATOR
- INNOVATOR
- LEADER



Everything I want to be is here for me. KMS gives me the resources and the choice to be more than just a student.

**WHAT ABOUT YOU ?**



**I AM DRIVEN  
TO EXCEL.  
I AM KINGSTONIA**



Kingston Model School is the brain child of Late Utpal Bhattacharjee. It has been established as a mark of his boundless dream, imagination and energy. Kingston Model School is a highly successful school with a long history of academic achievement, together with cultural and sporting excellence we provide an engaging disciplined, caring learning place where young people are provided with the support and encouragement they need to achieve their personal best.



# I AM A NEW VISION



"I AM INTEGRAL EDUCATION CHILD CENTRED  
LEARNING JOY AND CREATIVITY  
TRADITIONAL AND MODERN EDUCATION"



## OUR VISION

KMS is committed to providing high quality learning and childcare in a safe, caring and inclusive environment. We work together with parents / guardians to help our children thrive and go on to live happy and fulfilling lives.

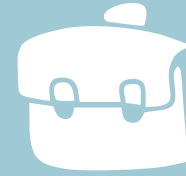
## OUR MISSION

The mission of Kingston Model School is to provide an environment that is stimulating, nurturing and supportive to children, where they can discover their inherent talent and where learning is fun. The philosophy of the school is to recognize and accept the uniqueness of each child; to create an ideal environment where children can comfortably and freely play with their inborn skill for overall physical and mental development. Our goal is to help children develop a positive self-concept, while preparing him/her for any curricular and extra-curricular program in which he/she intends to participate.





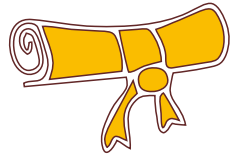
# "I AM NEW LEARNING"



Kingston Model School promotes integral growth, ambitious achievement, personal development, life-long learning by nurturing children to :

- ✦ Develop thinking and create inquisitive mind.
- ✦ Be flexible, adaptable and open to the opportunities, responsibilities and experiences of modern life and the joy of work.
- ✦ Have high self-esteem-respecting themselves, others and the environment.
- ✦ Be able to work independently, collectively in a co-operative environment.
- ✦ Recognize their capabilities and maximize their individual potential in all areas of the curriculum and extra curriculum.
- ✦ Advance and gain confidence in their innovative skills.
- ✦ Imbibe the spirit for aesthetic, cultural, intellectual, moral and physical development.





# “I MADE BY EXPERTS”

## WHAT MAKES KMS TRULY DISTINCTIVE ?

Chalk and duster is not enough for child education today. Our school environment is not a concrete box-like classroom. We have designed a learning space to facilitate your child to open up questions and find the answers all rounds. Even the architecture of our school incorporates ground breaking, progressive and modern educational techniques.



# “MESSAGE FROM OUR THINK TANKS”



## **LATE SRI UTPAL BHATTACHARJEE**

**Founder, Kingston Educational Institute**

Honoring Our Father Founder: A Legacy of Vision and Inspiration

Every great institution is built upon the foundation of a visionary leader whose dreams and determination guide its journey. Our father founder, was one such luminary whose profound dedication and foresight laid the cornerstone of our beloved school

With a mission to foster education, values, and holistic growth, Late Utpal Bhattacharjee believed in empowering young minds to shape a better tomorrow by providing quality education in our state of art infrastructure

From humble beginnings, he transformed the school into a beacon of excellence, where students were nurtured not just as learners but in such a manner so that they can become responsible citizens of the country.

His unwavering commitment to quality education, innovation planning in teaching, and emphasis on character-building continue to resonate in every classroom, every lesson, and every achievement of this institution. Under his guidance, KINGSTON MODEL SCHOOL flourished into a vibrant community that values knowledge, creativity, and moral integrity.

Though he has passed on the torch, his ideals and principles remain etched in our ethos. We, as a school community, honor his legacy by striving for excellence in all that we do, ensuring that his vision continues to inspire generations to come.

As we look to the future, we remember with gratitude and pride the remarkable contributions of our father founder, whose dreams remain the guiding star of KINGSTON MODEL SCHOOL

## PRESIDENT'S MESSAGE



At Kingston Educational Institute, we pride ourselves on our legacy of excellence in education, nurturing generations of students to realize their potential and achieve greatness. It gives me immense pleasure to introduce Kingston Model School, a premier institution affiliated with the Council for the Indian School Certificate Examinations (CISCE). From Preschool to Class 12, our journey with each child is a testament to our motto: "KG to PG"—a seamless pathway from early learning to higher education.

Kingston Model School is more than just an academic institution; it is a thriving ecosystem where values, creativity, and innovation are as important as scholastic achievement. Our dedicated team of educators ensures that students receive a holistic education, fostering their intellectual, emotional, and social growth. We believe in nurturing curious minds, encouraging them to explore beyond textbooks, and preparing them to excel in a rapidly evolving world.

The "KG to PG" philosophy embodies our commitment to providing a continuous and integrated educational experience. Beginning from the foundational years, we lay a strong emphasis on curiosity, critical thinking, and moral values. As students progress to higher classes, we equip them with advanced knowledge, life skills, and the confidence to pursue their

ambitions, culminating in the transition to higher education within Kingston Educational Institute itself.

Our state-of-the-art infrastructure, innovative teaching methodologies, and diverse extracurricular programs ensure that every student thrives in a nurturing and dynamic environment. Whether in academics, sports, arts, or community service, Kingston Model School instills in every child the essence of excellence and responsibility.

As the President of Kingston Educational Institute, I am committed to ensuring that Kingston Model School remains a beacon of quality education, guiding young minds on their journey from "KG to PG" and beyond. Together, let us shape a brighter future, empowering our students to become leaders, innovators, and compassionate citizens of the world.

**Mr. Tipam Bhattacharjee**  
President  
Kingston Educational Institute

## SECRETARY'S MESSAGE



It gives me immense pleasure to welcome you to Kingston Model School. We are prodding the pupils the much needed academic and co-curricular nourishment which will facilitate in making the responsible professionals and citizens of tomorrow. The opportunities are ensuring the students know the learning and are made curious learners so that

they can make situations regarding everything they would face in their life. We believe in building a career which will provide the students and their families awareness about every facet of their life, be it studies, profession or the career at large.

**Mrs. Uma Bhattacharjee**  
Secretary  
Kingston Educational Institute



## ACADEMIC ADVISOR'S MESSAGE



Kingston Model School (KMS) believes in holistic learning of an individual. This philosophy is deeply imbibed in everything the institution does for metamorphosing the pupils into the professionals of tomorrow. In addition to academics that emphasize on application based learning, the students are exposed to numerous platforms like student clubs, events and different activities to name a few that provides him/her with the nuances of learning, both inside and outside the classroom. The institute gives equal importance to the role played by every stakeholder to the primary and secondary education

set-up and therefore, thrives on building sustainable relationships with everyone, starting from parent, society and the community I welcome you to be a part of this thriving learning community, where every experience is part of the journey culminating in lifelong learning for everyone.

**Dr. Manishankar Chakraborty**  
PhD, MBA, Management Trainer  
Consultant, Faculty and Social Media Specialist for  
Teaching and Learning



## VICE PRINCIPAL'S MESSAGE



Dear KMS Community,

Welcome to our New academic year. It is a privilege to lead our vibrant school community as we continue our mission to deliver a holistic, value-based education. Our goal is simple: to create a nurturing environment where every student is inspired to learn, grow, and reach their highest potential. We emphasize academic excellence alongside the critical values of respect, resilience, and integrity. We are proud of the achievements this past term—from academic successes to our students'

enthusiastic participation in extracurricular activities and community service. These highlights are a testament to the dedication of our students, staff, and supportive parents. A strong home-school partnership remains vital to student success. I encourage all families to stay engaged through our school events and communication channels. Thank you for your continued trust and partnership. Together, we will ensure that every student at KMS thrives.

Warmly,

**Ms. Bijoya Mukherjee**  
Vice Principal  
Kingston Model School



## I AM DISCOVERING



## I AM LEARNING



- Determination
- Honesty
- Perseverance
- Respect
- Compassion
- Commitment
- Self Discipline
- Team Work
- Responsibility
- Trust
- Integrity
- Cleanliness





**"I AM  
MAKING  
IT BIG"**

## **INFRASTRUCTURE AT KINGSTON MODEL SCHOOL**



We have the best Infrastructure at Facilities which is required by our students for their holistic development

- ✦ Learning Centre with 24,100 books 40 Journals and Magazine 1200 Multimedia.
- ✦ Why-fi enabled campus
- ✦ safe Campus with Modern Security Systems (CCTV Camera)
- ✦ Sporting Facilities
- ✦ Purpose built play areas for pre primary and primary
- ✦ A modern centre for performing arts



# I AM EXCELLING



## Academic Par Excellence

Academic Excellence guaranteed at Kingston Model School through a series of innovative teaching and learning practices and a strong research base. The learning, unlearning and relearning process has been the hallmark of the school's journey in moving from good to great.

In the nut shell:

- A unique pedagogy called 'Understanding by Experiencing and Experimenting'.
- Research based approach
- Teaching by Audio / Visual Aids.
- Reflective practices





**“I AM  
40+ WAYS  
TO LEARN”**

## **LIBRARY THE LEARNING CENTRE**

The well-lit and spacious Library provides a conducive environment for complete conception. The array of books which covers fiction, non-fiction, auto-biographic encyclopedia and other textual books help to develop the interest in reading and also satisfies the child curious mind.

Children are allowed to borrow reading and learning materials for a week. Library facilities also provide through digital class solution and 200. CDs on various subjects make the library an ideal learning centre.

## **LABORATORIES**

Modern spacious labs are well ventilated physic, chemistry, biology, mathematics and geography lab provide the environment for developing a scientific temper amongst the children. Each lab is constantly upgraded to meet the demands of changing curriculum.



# OUR VIRTUAL JOURNEY



# SOME OF OUR FINEST FACILITIES



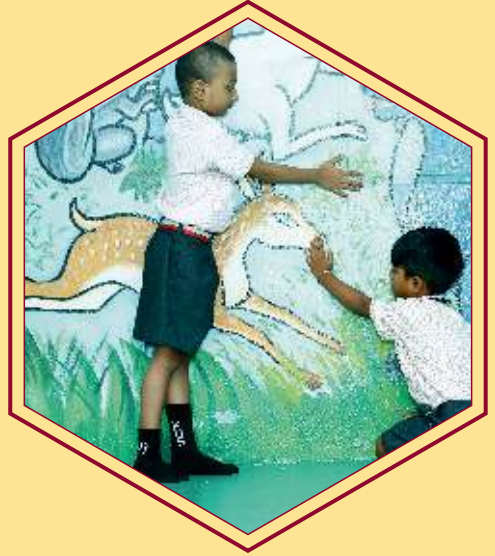
**TRANSPORT**  
**RANGE OF VEHICLES**  
**HASSLE FREE AND SAFE**  
**SMOOTH SEATING ARRANGEMENT**





**"I AM  
COMPETITIVE"**





# "I AM THE WINNER"

"Welcome to the journey of endless possibilities! Remember, every champion was once a beginner who never gave up. Believe in yourself, embrace challenges, and strive for excellence. This is your time to shine—your success story starts here!"



**“I AM  
INNOVATIVE”**



## **COMPUTER AND MULTIMEDIA**

The school has one of the best and modern computer lab with the state of art machines and internet facilities. Computer with the internet facilities make the lab a complete learning centre. The students are encouraged to research work and prepare project and presentations here under the supervision of our experienced teachers and provide computer to the children 1:1 basis.

## **FUTURISTIC**

Today the advancement of modern technology the world gets more connected. Hence it becomes imperative to achieve multi-cultural integrated knowledge with traditional learning.

We offer a curriculum that is global and create international Indians who can make a difference to their country and the world as well.

Nurturing creative talents through self learning and independent thinking. In KMS our prime object is to encouraging and developing their mental and physical health.

To meet the challenge of the future it is important to learn beyond the books. In KMS we intend to provide a platform for your child that will equip his/her to be a model citizen of tomorrow world.





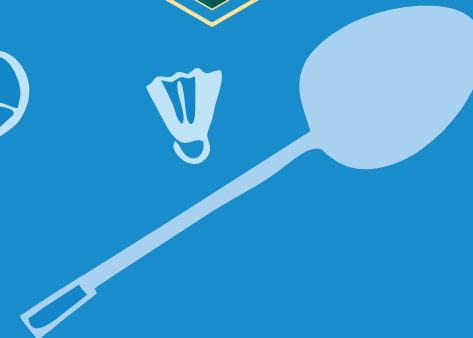
**"I AM  
STRONG"**

## **SPORTS & GAMES**

Sports & Games is an integral part of ICSE curriculum. KMS offer ample scope for sports & Games. The student take part in a wide variety of sports for enjoyment, relaxation and physical development. Beside weekly P.T. class, tournaments competition on house basis are held. The student get opportunity to show their talents.

Athletics  
Football  
Volleyball  
Handball  
Cricket  
Badminton  
Basket (Pro)

Gymnastics  
Carom  
Yoga  
Aerobics  
Chess  
Chinese Checker  
Table Tennis (Pro)



# I AM INSPIRED



# OUR INTER HOUSE ACTIVITIES



# OUR RECREATIONAL / DEVELOPMENT ACTIVITIES





**I AM HERE  
WHAT ABOUT YOU?**

**Corporate Office**

Purbasha, Jessore Road,  
Madhyamgram, Kolkata - 700 129.

**Campus**

Kajibari Bus Stop, Berunanpukuria,  
P.O. Malikapur, P.S. Duttapukur,  
Barasat, Adjacent to West Bengal  
State University, Kolkata - 700 126.

**KINGSTON MODEL SCHOOL**

A unit of Kingston Educational Institute

[www.kmscal.org.in](http://www.kmscal.org.in)

**Admission Helpline No.**

**8336911920 | 08069249500**

Email : [principalkms@keical.edu.in](mailto:principalkms@keical.edu.in)



## ADMISSION PROCEDURE

Submission of completed Admission Form within specific date.

Admission test from Class I onwards.

Results of the selected candidates will be published on the school Notice Board.

Application for admission on the prescribed form to Nursery class will be issued from the month of November.